

**MAUI ITS ARCHITECTURE
CONCEPT OF OPERATIONS
WORKSHOP**

1

May 14, 2015

AGENDA

- Introductions and Welcome
- Stakeholders Review
- Operational Concepts
- Elements
- Projects / Future Efforts
- Customized Service Packages
 - All Stakeholders Involved
 - Transportation and PSAPs
 - Transportation only
 - Transit
- Schedule/Next Steps

2

STAKEHOLDERS REVIEW

3

WHO IS A STAKEHOLDER?

- Technical Definition:
 - Someone that sends or receives transportation information to/from other stakeholders either directly or with their systems.
- Institutional Definition:
 - Someone who builds, operates or maintains ITS equipment.

4

MAUI STAKEHOLDERS

State or County	Stakeholder Name	Abbreviation
State	Department of Transportation Highways Division, Maui District	HDOT-HWY-M
State	Department of Transportation Airports Division, Maui District	HDOT-AIR-M
State	Department of Transportation Harbors Division, Maui District	HDOT-HAR-M
County of Maui	Department of Public Works	Maui DPW
County of Maui	Police Department	Maui Police
County of Maui	Department of Fire and Public Safety	Maui Fire
County of Maui	Civil Defense Agency	Maui CDA
County of Maui	Department of Transportation	Maui Bus
County of Maui	Medical Transportation	Maui EMS
County of Maui & State of Hawaii	Maui Metropolitan Planning Organization	Maui MPO

5

OPERATIONAL CONCEPTS

6

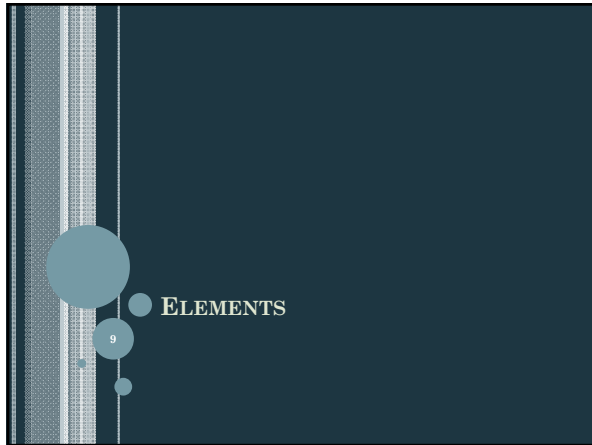
OPERATIONAL CONCEPTS

- Defines roles and responsibilities of stakeholders in providing the ITS services
- Organized by
 - Stakeholder
 - Service Area
 - Emergency Management
 - Incident Management
 - Information Dissemination
 - Maintenance Management
 - Parking Management
 - Traffic Signal Control
 - Transit Management

7

OPERATIONAL CONCEPT EXAMPLE

Stakeholder	Service Area	Roles and Responsibilities Description	Status	Notes
HDOT-HWY-M	Incident Management	Perform network surveillance for detection and verification of incidents on state roads	Future	
		Send traffic, incident information and traffic images to the 911 center and Maui County EOC	Future	
	Information Dissemination	Provide traffic information to travelers via HDOT DMS equipment	Existing	HDOT currently operates one DMS, but the DMS is not controlled remotely.



ELEMENTS

9

ITS INVENTORY

- A list of ITS elements and the elements that interface with them
- And an ITS element is:
 - The name used by stakeholders to describe high level parts of an ITS system.
- Types of Elements:
 - Centers – Traffic, Emergency, Transit
 - Field Devices – Traffic, Maintenance
 - Traveler Interfaces – Websites, Smart Phones
 - Data Systems – Planning, Archives
 - Vehicles – Transit, Emergency, Maintenance

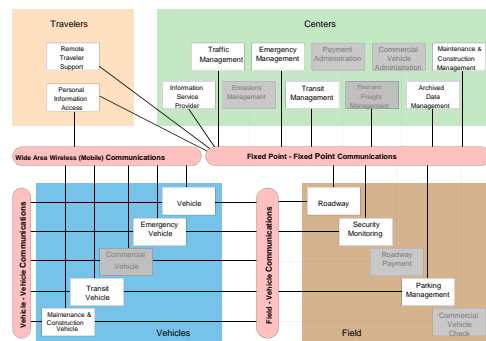
10

REGIONAL ITS INVENTORY

- Review current and planned elements
 - Owner
 - Status
 - Definition
 - Entity Type

11

REGIONAL ITS INVENTORY: SUBSYSTEMS



12

REGIONAL ITS INVENTORY

- Let's go to the inventory....

13

REGIONAL ITS PROJECTS

14

REVIEW ITS PROJECTS

- ITS projects identified from stakeholder interviews with key
- For each project consider
 - Name, Description
 - Key Stakeholders
 - Timeframe
 - Near-Term: Within the next 5 years
 - Long-Term: More than five years
 - Mapping to Architecture

15

ITS PROJECTS

- Will input ITS projects into the Turbo Architecture database.
- Ability to generate outputs to create a systems engineering analysis and functional requirements for each project.
- Let's go to Project List.....

16

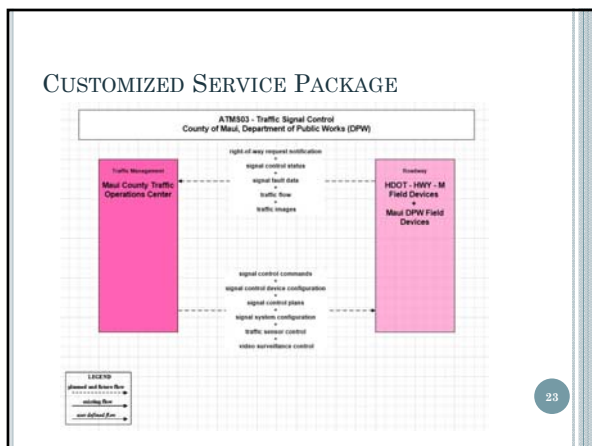
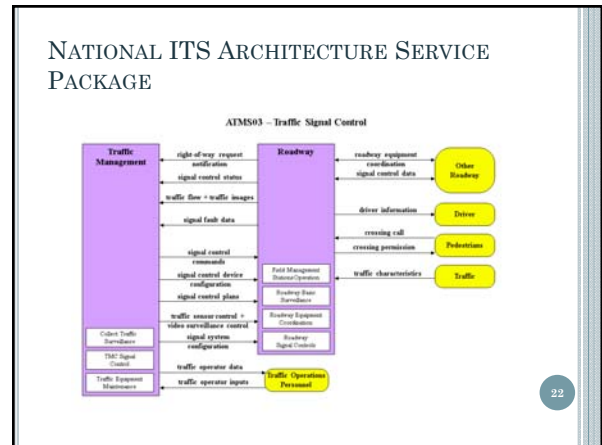
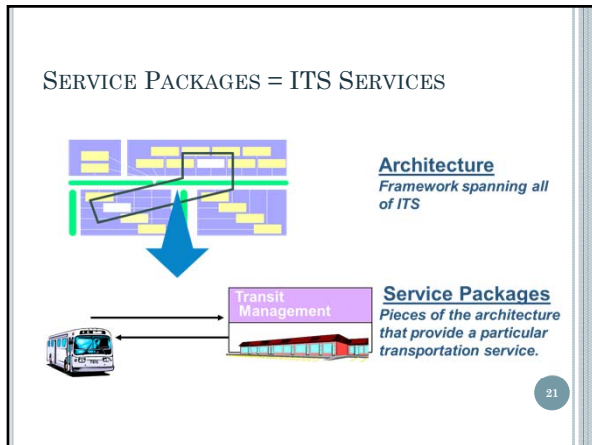
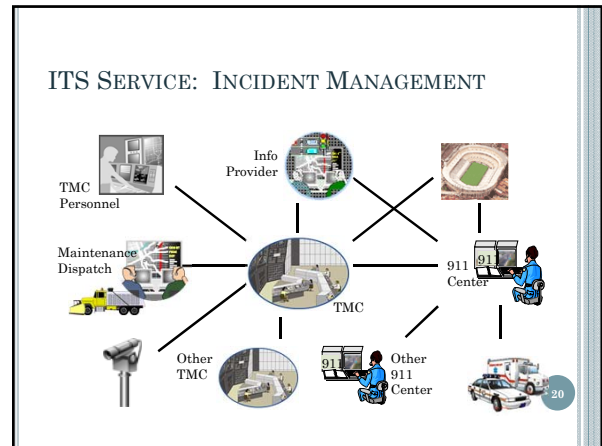
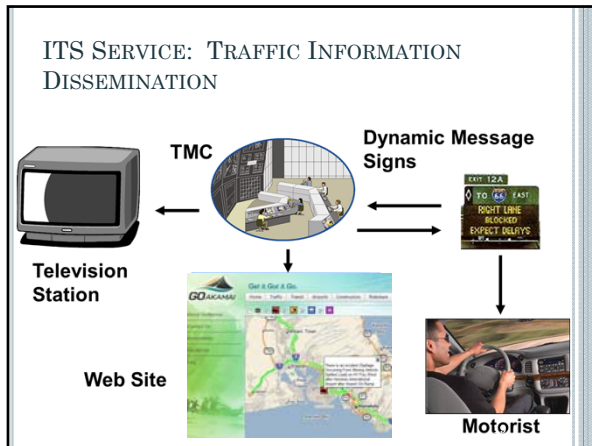
ITS SERVICES

17

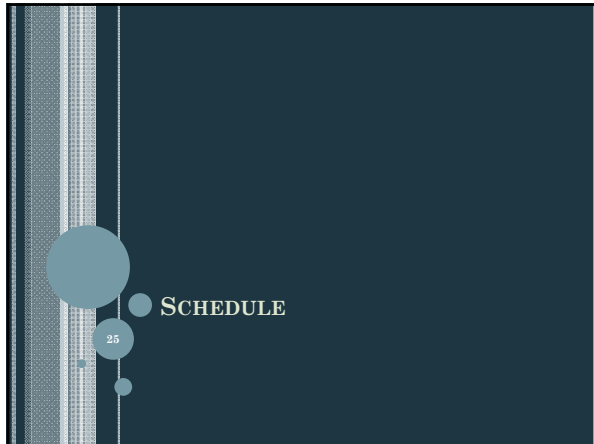
ITS SERVICES COVER

- Traffic Management
- Traveler Information
- Transit Management
- Emergency Management
- Commercial Vehicle Operations
- Maintenance and Construction
- Archived Data Management
- Advanced Vehicle Safety

18



- ### CUSTOMIZED SERVICE PACKAGE DIAGRAMS
- Customize to reflect regional operational concepts
 - Review selected service package diagrams
 - Incident Management
 - Emergency Management
 - Disaster/ Evacuation
 - Traveler Information
 - Traffic Management
 - Transit Management
 - Review first an Summary Diagram for the area, then the details of each service package
- A small circle with the number '24' is located in the bottom right corner.



SCHEDULE & NEXT STEPS

- May-June 2015: Update Service Package Diagrams to reflect Workshop Discussion
- July 2015: Stakeholder Review of Architecture
- August 2015: Finalize Maui ITS Architecture

Note: The HDOT Administration is currently re-prioritizing projects. The Statewide ITS Architecture project may be impacted. Until then, please consider this schedule as preliminary.

26

OPEN

- Questions?
- Comments?

27

THANK YOU!!!!

28